

QCC Spring 2023 – Course Modalities

In-Person: *Class meetings are all in-person*



Course instruction is provided at a specific location on-campus on a specific day and time.

SET SCHEDULE: Yes
SET LOCATION: Yes
LIVE: Yes, in-person
ONLINE CLASSES: Not Required

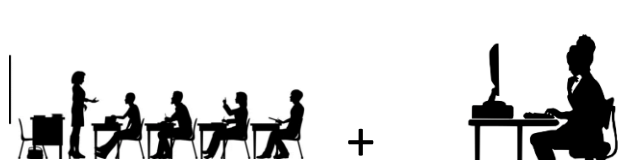
Online: *Offered completely asynchronously online*



Students log in to Blackboard to review course content and assignments. There are no scheduled meeting times, course work is completed based on course deadlines as set by the professor. These courses use various online tools that include but are not limited to discussion boards, assignments, testing, web links, videos, group work, journals, etc.

SET SCHEDULE: No
SET LOCATION: No (fully online)
LIVE: No
ONLINE CLASSES: Required: Entire course

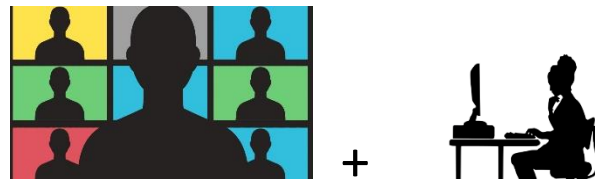
In-Person - Blended: *Combines weekly in-person class and asynchronous online instructional design*



This type of course delivery includes a combination of both in-person and online instruction where students will meet with their instructor once a week in class (75 minutes) at a specific day and time on campus. Additional coursework is delivered asynchronously online through Blackboard that meet course objectives. These courses, in addition to the in-person class, use various online tools that include but are not limited to discussion boards, assignments, testing, web links, videos, group work, journals, etc.

SET SCHEDULE: Yes
SET LOCATION: Yes
LIVE: Yes, in-person weekly
ONLINE CLASSES: Yes, online work required

Remote - Blended: *Real time virtual classes (a scheduled time to be in a virtual classroom) and asynchronous online instructional design*



Classes are held virtually at a specific day and time, using Zoom once a week (75 minutes). Additional coursework is delivered asynchronously online through Blackboard that meet course objectives. These courses, in addition to the virtual class meeting, use various online tools that include but are not limited to discussion boards, assignments, testing, web links, videos, group work, journals, etc.

SET SCHEDULE: Yes
SET LOCATION: No (Zoom at a set time)
LIVE: Yes, (Zoom at a set time)
ONLINE Classes: Yes, online work required